





# System Upgrades

Walton De-Ice

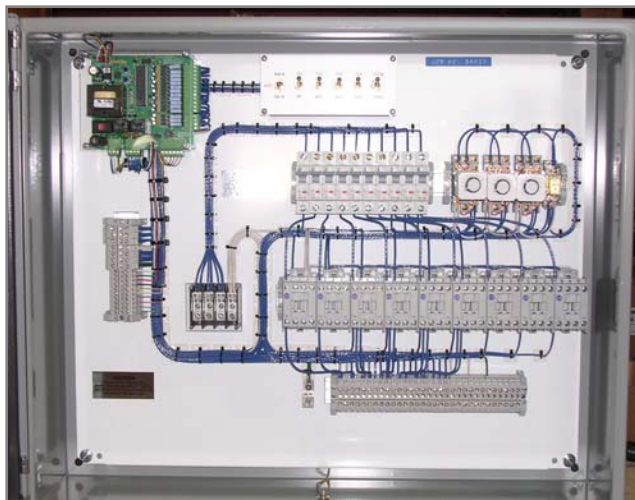
Heated

W.B. Walton Enterprises, Inc. installs new Gas Heaters on existing systems for Customer's interested in keeping their De-Icing Systems trouble free for years to come. Walton encourages all Customers with De-Icing Systems more than 5 years old to contact Walton at [sales@de-ice.com](mailto:sales@de-ice.com) to find out more information and pricing.

W.B. Walton Enterprises, Inc. has received  and  Compliance on various Snow Shield Electric Heaters. Improvements in safety and reliability were made and can be enjoyed by all Customers with existing systems by simply replacing your existing Electric Heater with a new unit. For Information on the new Electric Heaters for your particular system and pricing, please contact Walton at [sales@de-ice.com](mailto:sales@de-ice.com).



100,000 BTU Natural Gas Heater undergoing testing. All new products incorporated into Walton Systems go through vigorous testing prior to release into the product line.



ADC-2000 Automatic Local and DP-8 Remote Control Units replace the last generation control unit the DDC-400. Simplicity and reliability were built into the new units yet the customer gets the same monitoring and control capabilities as with the DDC-400.

W.B. Walton Enterprises, Inc. has also developed the next generation automatic control units. The ADC-2000 Local and DP-8 Remote Unit are a direct replacement for the last generation DDC-400 for systems requiring as many as 4 Gas or Electric Heating Units.

For Systems requiring as many as 6 Gas or Electric Heaters, the ADC-3000 Local and Remote Units would be a direct replacement for the last generation DDC-400.

No more cards to pull out of a Mother Board with the possibility of damaging components due to voltage present. Only 1 board has all circuitry required for the new Control Units to monitor and control the same as the last generation DDC-400 would.

For Information on the new Control Units for your particular system and pricing, please contact Walton at [sales@de-ice.com](mailto:sales@de-ice.com).